



Interior Design

Furniture Consultancy

Refurbishment
Consultancy

Lighting Design

Project Management

Engineering Consultants



Luxury perfected



Luxury perfected



About US

Based in London, **Luxefinity** is a leading interior, lighting, and furniture design supply company known for innovation, creativity, and a proactive approach. With over 65 years of combined industry experience, our expert team delivers superior fit-out services and transformative design solutions that enhance spaces and experiences.

We offer a full range of services from bespoke conceptual sketches to detailed architectural plans, ensuring seamless integration of imaginative design and technical precision through close collaboration with architects, designers, and stakeholders.

Serving private residential, commercial, and corporate sectors, our designs balance stunning aesthetics with functionality, tailored to reflect each client's brand, culture, and goals.

We also provide specialised logistics and move management to ensure smooth, stress-free relocations, with dedicated project managers coordinating every detail to minimise disruption.

Whether starting a new design, upgrading interiors, or relocating, **Luxefinity** is your trusted partner for innovative, high-quality solutions that bring your vision to life and create inspiring, effective environments.



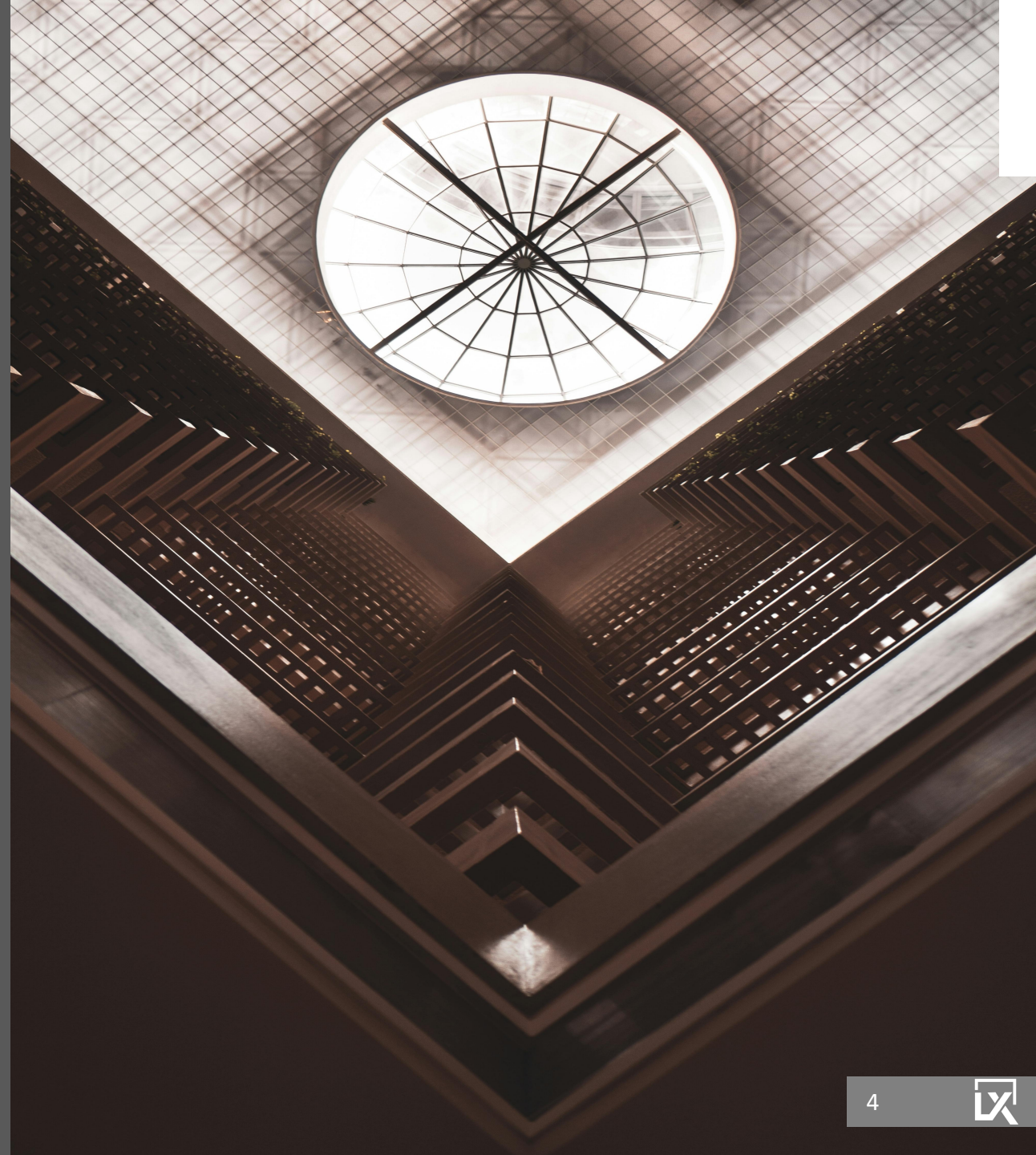
Corporate Vision

At **Luxefinity**, our vision is to redefine the standards of interior design, furniture specification, and lighting consultancy through innovation, integrity, and unwavering dedication to excellence. We aspire to create environments that inspire, empower, and elevate the people who use them, spaces that combine thoughtful design with meaningful functionality.

Driven by courage, fairness, and an enduring loyalty to our clients, we continuously challenge convention and push the boundaries of what exceptional service looks like. We believe that great design is rooted in understanding and collaboration, and our commitment to personalised, client-focused solutions ensures that every project we undertake reflects both individuality and purpose.

As we look toward the future, sustainable growth sits at the heart of our ambitions. We embrace progress through responsible design, ethical partnerships, and forward-thinking practices that prioritise environmental and social wellbeing. Our goal is not only to transform spaces today but to contribute positively to the world we shape for tomorrow.

Through innovation, trust, and an uncompromising pursuit of quality, **Luxefinity** is building a legacy of design excellence, one project, one relationship, and one inspired space at a time.



Our Services

DESIGN | CONSULTANCY | DELIVERY

Interior Design & Space Planning

- Concept Design
- Space Planning
- Materials & Finishes
- Furniture Integration
- Lighting Design
- Technical Documentation

Integrated Design Services

- Interior Design
- Furniture Consultancy
- Lighting Specification
- Project Coordination

Our Design Focus

- Creative Strategy
- Workflow & Functionality
- Brand & Identity Alignment
- Detail & Precision

Our Process

- Discover
- Design
- Develop
- Deliver



Sectors

- **Corporate**

Luxefinity delivers sophisticated corporate interiors that enhance productivity, reflect brand identity, and support modern ways of working. Our designs balance functionality with refined aesthetics, creating professional environments that promote collaboration, wellbeing, and long-term adaptability.

- **Commercial**

We provide interior design solutions for a wide range of commercial developments, ensuring spaces are both operationally efficient and visually compelling. From tenant fit-outs to mixed-use environments, our approach integrates design excellence with technical precision and project delivery coordination.

- **Residential**

Luxefinity creates bespoke residential interiors that combine comfort, elegance, and individuality. We work closely with clients to craft highly personalised living environments, incorporating tailored layouts, curated materials, and refined detailing to elevate everyday life.

- **Retail**

Our retail design expertise focuses on creating immersive customer experiences that strengthen brand presence and drive engagement. Through strategic space planning, impactful finishes, and considered lighting and display design, we deliver interiors that enhance both functionality and commercial performance.

- **Leisure**

We design leisure environments that inspire relaxation, enjoyment, and memorable user experiences. Whether for wellness facilities, entertainment venues, or lifestyle destinations, our interiors are crafted to be inviting, durable, and atmospherically distinctive.

- **Hospitality**

Luxefinity specialises in hospitality interiors that deliver exceptional guest experiences through timeless design, layered materiality, and attention to detail. From boutique hotels to restaurants and lounges, we create spaces that balance luxury, comfort, and operational flow.



Design Process

Luxefinity's Six-Stage Interior Design Process begins with an immersive presentation phase, combining initial briefings, site surveys, and early budget guidance, culminating in our appointment as the Client's interior design partner.

The Pre-contract stage follows with detailed consultations, design development, and the preparation of comprehensive design, specification, and tender documentation to support contractor engagement and project formalisation.

During the Lead-in stage, we coordinate closely with appointed contractors and suppliers, confirming material selections, programme alignment, approvals, and site readiness to ensure design intent is fully established before works commence.

In the Site Works phase, **Luxefinity** provides ongoing design oversight and contract administration support through regular site reviews and coordination, ensuring the interiors are delivered with precision, including finishes, bespoke elements, and furniture installation through to occupancy.

The Handover stage includes final inspections, resolution of outstanding items, and compilation of close-out documentation to ensure a smooth transition for the Client.

Finally, throughout the Defect Liability Period, we remain engaged in supporting post-completion adjustments, ensuring the completed interiors maintain **Luxefinity's** enduring standards of quality and client satisfaction.



Portfolio



Corporate

IT Company Office

Scope:

- Interior Design
- Lighting Design
- Furniture Consultancy
- Project Supervision



Financial Co. Headquarters

Scope:

- Interior Design
- Lighting Design
- Furniture Consultancy



NB.

"Some projects shown were completed while the founders were employed by other organisations. All imagery and design rights remain the property of their respective owners and are presented solely to demonstrate professional project delivery experience"



Commercial /F&B

Intercontinental Restaurant

Scope:

- Interior Design
- Lighting Design
- Furniture Consultancy
- Project Supervision



Italian Restaurant

Scope:

- Interior Design
- Lighting Design
- Furniture Consultancy
- Engineering Consultancy



NB.

"Some projects shown were completed while the founders were employed by other organisations. All imagery and design rights remain the property of their respective owners and are presented solely to demonstrate professional project delivery experience"



Residential

Private Palace

Scope:

- Interior Design
- Lighting Design
- Furniture Consultancy
- Project Management



Private Villa

Scope:

- Interior Design
- Lighting Design
- Furniture Consultancy
- Project Management



NB.

"Some projects shown were completed while the founders were employed by other organisations. All imagery and design rights remain the property of their respective owners and are presented solely to demonstrate professional project delivery experience"



Retail

Haute Couture Showroom & Atelier

Scope:

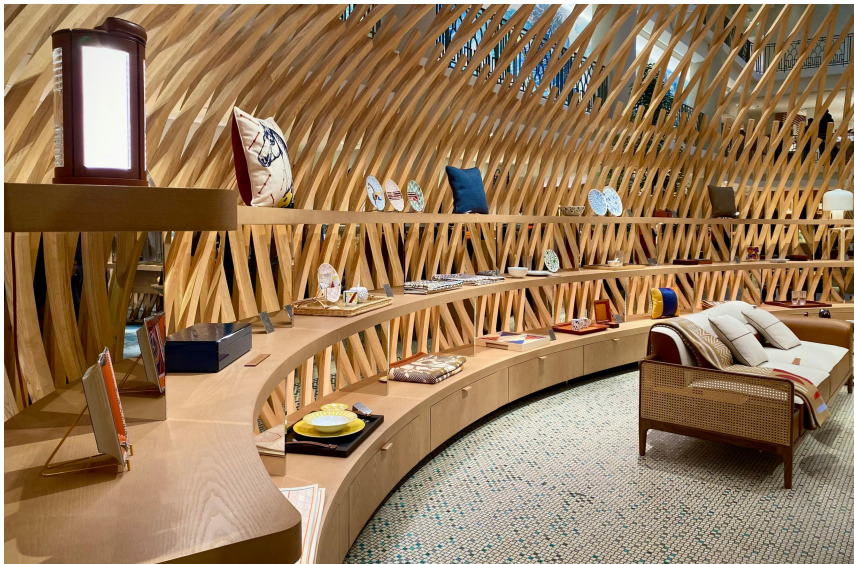
- Interior Design
- Lighting Design
- Shopfront Display
- Furniture Consultancy



Shopping Mall

Scope:

- Interior Design
- Lighting Design
- Engineering Consultancy



NB.

"Some projects shown were completed while the founders were employed by other organisations. All imagery and design rights remain the property of their respective owners and are presented solely to demonstrate professional project delivery experience"



Leisure

Hotel & Spa

Scope:

- Interior Design
- Lighting Design
- Furniture Consultancy
- Spa Equipment supply
- Project Supervision



Private Spa

Scope:

- Interior Design
- Furniture Consultancy
- Spa Equipment supply
- Project Management



NB.

"Some projects shown were completed while the founders were employed by other organisations. All imagery and design rights remain the property of their respective owners and are presented solely to demonstrate professional project delivery experience"

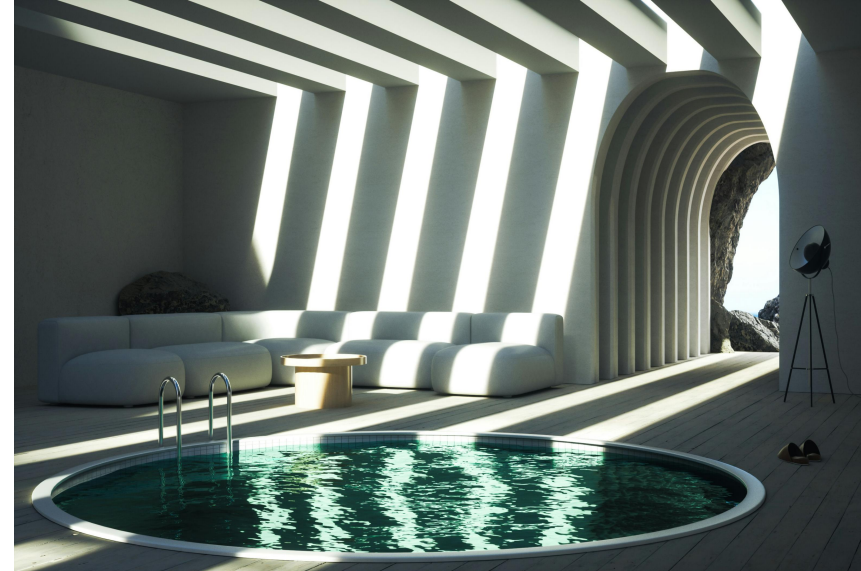


Hospitality

Hotel-Apartments

Scope:

- Interior Design
- Lighting Design
- Furniture Consultancy
- Project Supervision



Hotel

Scope:

- Interior Design
- Furniture Consultancy



NB.

"Some projects shown were completed while the founders were employed by other organisations. All imagery and design rights remain the property of their respective owners and are presented solely to demonstrate professional project delivery experience"



Hospitality

Hotel & Resort

Scope:

- Interior Design
- Lighting Design
- Furniture Consultancy
- Project Supervision
- Engineering Consultancy



NB.

"Some projects shown were completed while the founders were employed by other organisations. All imagery and design rights remain the property of their respective owners and are presented solely to demonstrate professional project delivery experience"

Hospitality

Airport Lounges

Scope:

- Interior Design
- Lighting Design
- Furniture Consultancy
- Project Supervision
- Engineering Consultancy



NB.

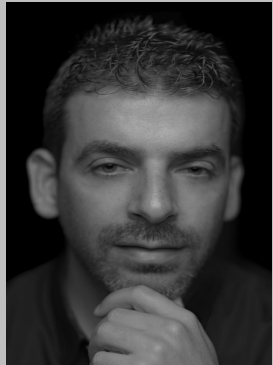
"Some projects shown were completed while the founders were employed by other organisations. All imagery and design rights remain the property of their respective owners and are presented solely to demonstrate professional project delivery experience"



The Team



Team



Said A

Is a seasoned Interior Architect with over 15 years of experience across residential, commercial, aviation, and hospitality projects. Combining interior architecture with a foundation in industrial design, he brings a distinctive perspective rooted in technical rigour and creative innovation.



Reymondos K

is a seasoned professional known for his innovative full life-cycle design and project management. With a proven track record, he consistently directs strategy, delivers exceptional results, and exceeds expectations, even in high-pressure situations. A key strength lies in his proactive communication style and can-do attitude, fostering effective collaboration and solution-oriented approaches. His communication skills are instrumental in managing teams and building strong client relationships in Europe and the Middle East.



Josiane A

Josiane Al Akouri is an accomplished Interior Designer with over 10 years of experience creating thoughtful, functional, and refined spaces. Her expertise covers concept development through execution, with a focus on design excellence, client satisfaction, and innovative solutions.



Melanie A

is a highly accomplished Interior Designer with 39 years of experience specialising in commercial and hospitality projects. She brings exceptional design leadership and management expertise, with a keen eye for detail and a strong ability to deliver sophisticated, high-quality interiors from concept through to execution.



Garo T

Is a dedicated Project Management professional with over 10 years of experience in project supervision and delivery. He brings strong leadership, problem-solving skills, and a focus on client satisfaction and successful outcomes.



Ahmad M

Is a dedicated Lighting Designer professional with over 12 years of experience in Daylight & Artificial Light. He brings strong leadership, problem-solving skills, and a focus on client satisfaction and successful outcomes.



Jonalynne S

Is a highly skilled Architect with 9 years of experience crafting innovative commercial, residential, and urban design projects. She has a proven ability to guide projects from initial concept through to completion, delivering thoughtful, functional, and visually compelling spaces.



Brand Amalgamation

Recognizing the pivotal role of identity and design cohesion, our ethos transcends mere aesthetics. **Luxefinity**'s designers expertly translate each client's unique essence, whether a personal lifestyle vision, a corporate brand, a retail concept, or a hospitality experience, into the architectural and interior fabric of the space, weaving a narrative that resonates with purpose and distinction. From bespoke spatial elements and tailored material palettes to meticulously curated brand touchpoints, graphics, and detailing, every facet of our design endeavour is crafted to establish a cohesive and immersive visual language. The result is an environment that not only reflects the client's values and aspirations, but also leaves an indelible imprint on residents, guests, customers, employees, and visitors alike, fostering lasting connections through exceptional design.



creative minds !



Collaboration & Association

Based in central London, **Luxefinity** is a dynamic hub for design innovation, built on strong partnerships with architects, designers, and industry experts. Our collaborative approach is key to delivering exceptional, client-focused solutions.

Rooted in a legacy of successful projects across diverse sectors, we take a proactive, transparent approach, investing time upfront to fully understand each client's unique needs and goals.

Our experienced management team carefully gathers and aligns client requirements, ensuring clear technical communication and seamless coordination with architectural and interior design teams.

This collaborative process unites passionate, multidisciplinary teams whose creativity and expertise consistently elevate projects beyond expectations, delivering inspired designs and meaningful benefits.

At **Luxefinity**, collaboration is a core philosophy that fuels creativity, strengthens relationships, and ensures every project reflects our clients' shared ambitions, creating environments that inspire, engage, and endure.





We are located in the heart of London !

128, City Road, London, EC1V 2NX

UNITED KINGDOM

T: +44 20 38071828

M: +44 07598 184125

enquiries@luxefinity.uk



We design projects across Europe & the Middle East